

Portable Thermal Printer

Instruction Manual



Install Password: 1234
Android BT APP

June, 2022

Please click the below link to download printer drivers and other tools.
<http://www.cnfujun.com/d/41>

Notice :

Thanks for using our Portable Printer !

To ensure the safety of storage and transportation, we stick a insulating tape on the metal of the Li-Ion battery . Please kindly take off the insulating tape before its firstly turning on.



Insulating tape

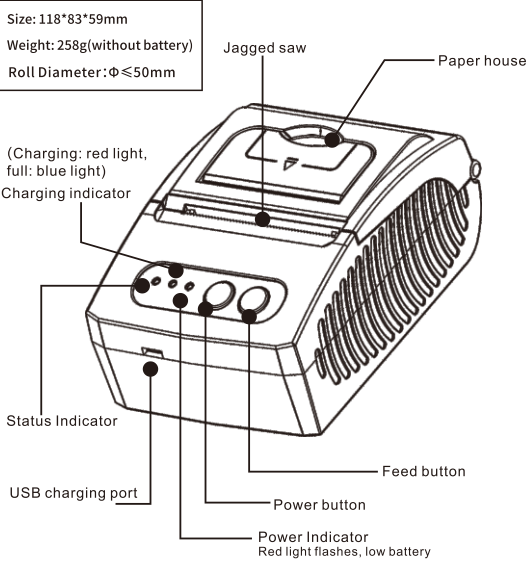
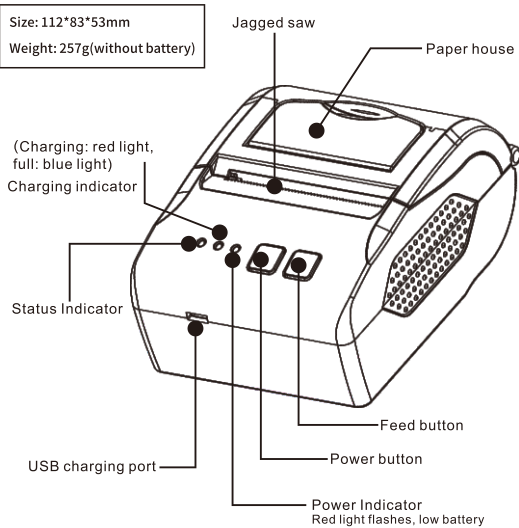
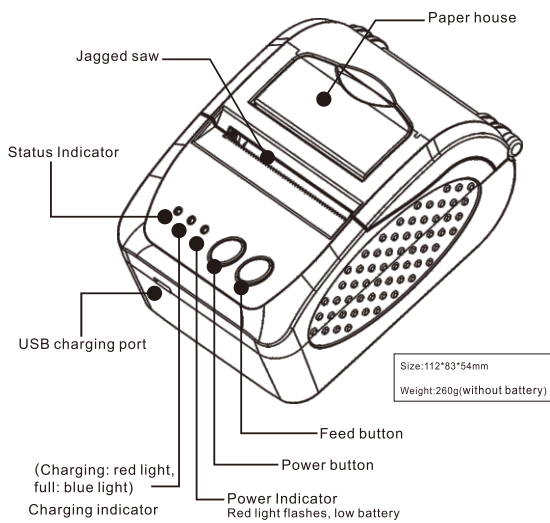
Warm tip: Please seal the battery and pay attention to the garbage classification when discarding it to avoid the environment pollution .

1.Specification

PrintingMethod: Direct Thermal
Speed:≤90mm/sec
Reliability TPH Life: 100km
Resolution: 203DPI (8dot/mm)
Printing Width: 48mm (384dot)
Paper Width: 58±01mm
Roll Diameter: ϕ ≤43mm / ϕ ≤50mm
Paper Type: Thermal Paper
Power: rechargeable lithium battery
Battery: 7.4VDC, 2000mAh
Charging mode: USB 5V/2A
Print parameters: support to download the Logo trademark, support bar-code print.
Support bar-code types: UPC-A / UPC-E / JAN 13 (EAN13) / JAN8 (EAN8) / CODE39 / ITF / CODABAR / CODE93 / CODE128 ; Two-dimensional code: QR CODE
Character size: 384 dots/line
FontA:12*24dots, 1.5(W)*3.0(H)mm
FontB: 9*17dots, 1.1(W)*2.1(H)mm
FontC: 9*24dots, 1.1(W)*3.0(H)mm
Simplified/Traditional:24*24dots,3.0(W)*3.0(H)mm
Printing Chinese character: Chinese: simplified Chinese 24x24 point, support GB18030 font library, support Taiwan and HK traditional(complex font)
ANK: ANKcharacters
Language: support for multiple languages
(Support Traditional, Korean, Japanese, etc. must be instructed before purchased)Extended character table:
OEM437/Katakana/OEM850/OEM860/OEM863/OEM865/West Europe/Greek /Hebrew/EastEurope/Iran/WPC1252/OEM866/OEM852/OEM858/Iran I I / Latvian/Arabic/PT1511251/OEM747/WPC1257/Vietnam/OEM864/Hebrew/ WPC1255/Thai

Emulation: ESC/POS command
Interface: USB, Bluetooth 2.0&4.0(option)/SPP agreement or infrared/IRCOMM agreement (optional)/Android up to 4.0 operation system.
Driver: Win2003/Win2000/Win7/WinXP/VISTA/WIN8/Win10/LINUX
Working Temperature: -10~50℃ ; Humidity: 10~90%

2.Appearance



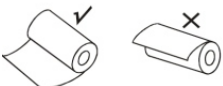
3.Communication Interface

- 1. Bluetooth 2.0/4.0 : standard Bluetooth 2.0/4.0 Communications Protocol
- 2. USB : standard USB Communications Protocol

4.The installation of the paper roll

The printer use 58MM thermal paper, and adopt to easy paper loading. So the paper is very convenient install.
Paper diameter Max 43mm.
Thermal paper installation method is as follows:

- (1) Open the printer top cover
- (2) Thermal Paper as follow Graph to put into paper storehouse



- (3) Put out a little of the paper outside printer,then close the top cover.
- (4) Use paper sawtooth tear off redundant paper

Button Operating Instructions

POWER (Blue Light)	ERROR (Red Light)	Printer Status
OFF	OFF	Printer Close
ON (Always)	OFF	Printer open and have paper
ON(Always)	Flash	Printer Open , without paper
Under the normal working status, the paper feeding begins when press : FEED- button, and stop when loosen: FEED= button.		The printer paper feed
Power off the printer, then hold down the 【FEED】 button and press the power button at the same time. Wait 2 seconds ,then loosen the 【FEED】 button,the current setting will be printed out.		The printer Self test
Power off the printer, then hold down the 【FEED】 button and press the power button at the same time. Wait until the power indicator & 【ERROR】 led are both on, and then 【ERROR】 led goes off, then loosen the 【FEED】 button, the language setting status will be printed out.		Transformation in both English and Chinese

5.Operating Manual for Android OS

Part 1 :

Find the APP from the driver file , Then follow the path : "Android SDK---BLUETOOTHDEMO ----bin----BT-POSPrinter.APK " , and install it into your Android device.

Or scan the below QR code to download the Android app:



Install Password: 1234
Android BT APP

Part 2 : Operation instructions

1.Open the Android APP

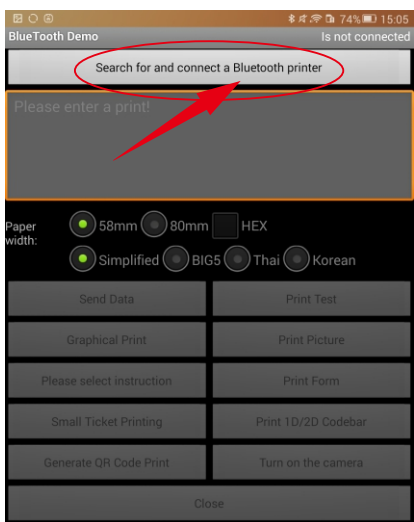
If you installed a Bluetooth demo, click "POSPrinter-BT"

If you installed a USB demo, click "POSPrinter-USB"

If you installed a demo of network port or WIFI, click "POSPrinter-WIFI"



2. After opening the DEMO, you need to connect the printer.
When the port what you connected is Bluetooth
Click "Search and connect Bluetooth printer"

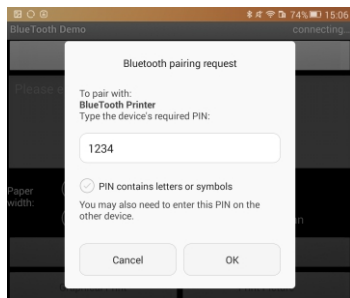


If you need to search for new printers again, click "Scanning Device" and select the printers you want to add.

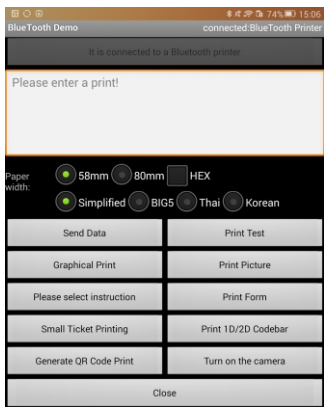


Enter the pairing code, the default is 1234 or 0000, click "OK".

说明书展开尺寸:425*238mm 折后成品尺寸:119*85mm 印刷到一张纸上 (此页为反面)

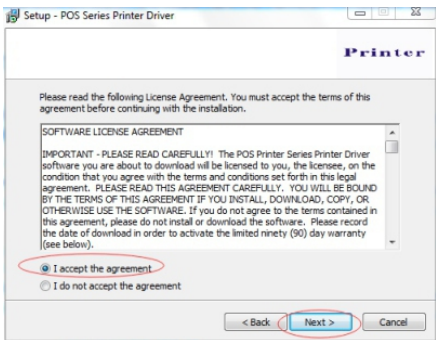


The connection is successful, as is shown:



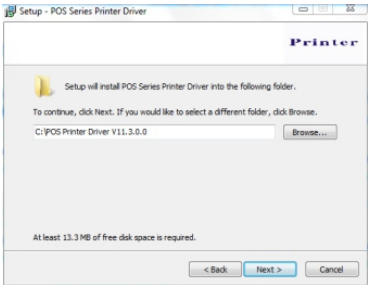
10

3. please read the following License Agreement ,accept and continue the installation , as shown below:



15

4. Click 'Next' after the operation in the below figure(Customer can also modify the path of the driver can choose the default installation path)



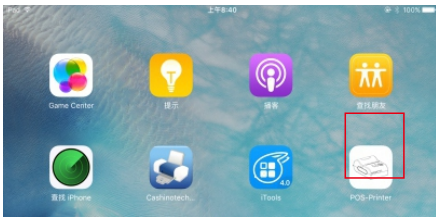
6.Operating Manual for IOS APP

1. Download the Test Tools "POS-PrinterV1.0" from App Store,as below:



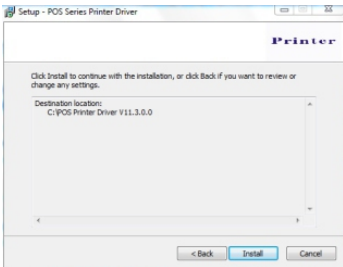
(Image 1)

2. Turn on the Bluetooth setting of IOS device , then click "POS-Printer":



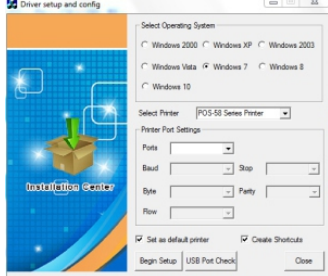
11

5.Then click"Next"after the operation as shown below ,choose "install", if you computer has antivirus software ,appears to block the installation of the windows allow this operation.

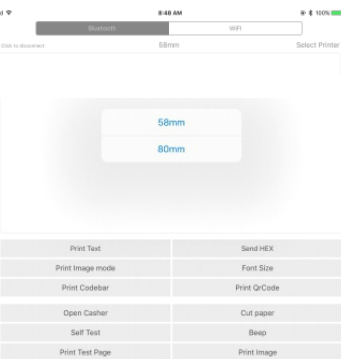


16

6.Wait for the installation interface appear as follows after the completion , choose your computer's operating system ,then select the printer model (POS58 series printer),if you use a USB interface to communicate , click "USB Port Check"automatically recognize the computer USB port ,click Next to continue , as shown below:



3. Into the App of "POS-Printer", select the paper width as below:



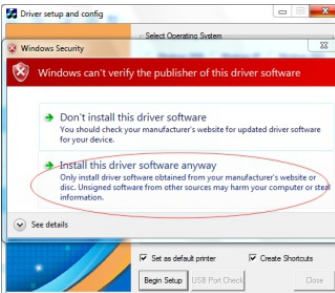
(Image 3)

4. Select the way of communication of printers, "Bluetooth" or "WIFI":

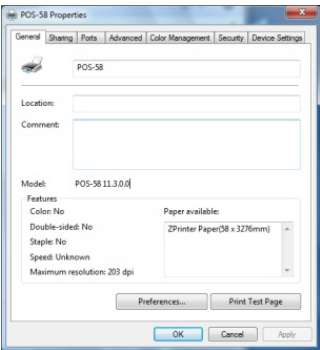


12

7.Click Begin Setup ,as shown below appears ,select "install"or " install this driver software anyway"

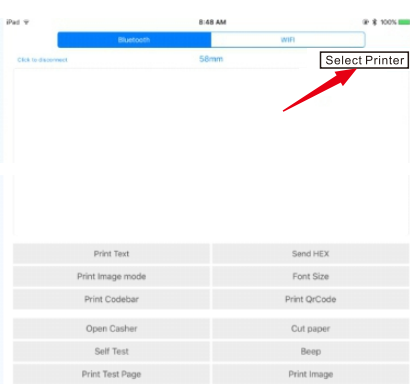


8. Completing the driver installation , as shown below:



17

5. If connect with Bluetooth, then you can click " Select Printer" first, you will search the "Bluetooth Printer" (the default name of printer is Bluetooth Printer), click it to be connected.



13



18

If the printer prints a normal page, then it shows that the work was successful. Note: If the printer prompts "Print Error", please return to the "port" option from the "USB001" started trying to choose

8.Cleaning of printer head

Cleaning of printer

When the printer has the following conditions, you should clean the printer head:

- ① The printer does not print clearly and the thermal paper is Ok.
- ② The printer Print pages lengthways is not clear
- ③ It's getting too noisy while feeding paper or printing.

Printer head cleaning steps are as follows:

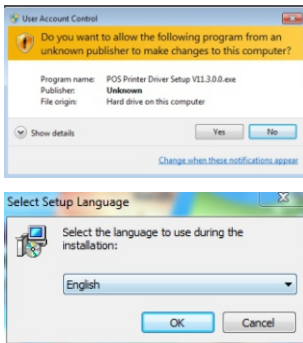
1. Power off the printer and open the paper room cover. Remove the thermal paper roll.
2. If the printer just finished printing , please wait for the print head to cool down.
3. With a soft cotton cloth dipped in ethanol (please make sure there is no dripping), wipe the thermal printer head gently and remove any dust or stains.
4. Wait for the complete evaporation of any ethanol, then place the thermal paper roll back in the printer and close the paper room cover, then print a test page.

Notes :

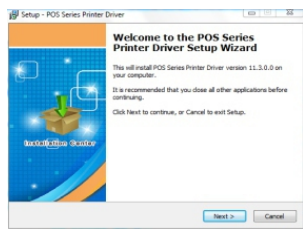
- When the printer maintenance must ensure that the power is shut down
- Hands or other metal tools away from the surface of the printer head, do not use tweezers to scratch the surface of the printer head and other sensitive parts.
- Do not use gasoline, acetone and other organic solvents for printer head cleaning.

7.Driver Installation (for USB Port)

1. click the link <http://www.cnfujun.com/d/41> to download printer driver , and find the driver in the menu (58,80 series printer driver software), then click it to start the installation , you will see the pictures as below which need to choose the language :



2.Then select the language click "OK",as shown below ,click"Continue"to next step.



14

9.General Troubleshooting

- 1: Self printing test is ok,but printer does not work after driver installation.
A: Recheck the installation according to above installation wizard and see if we selected the right port or ask service center for advice if needed.
- 2: Malfunction of paper feeding?
A: Use soft brush to clean the paper sensor and try again or send it to the service center for repair.
- 3: Malfunction of the indicator light
A: Check the cable connecting way / adapter / power cord / switch on or off? Or contact the service center for repair.
- 4: Messy code printing except Arabic numeral printing.
A: language switching incorrectly, please use our tool "IPrinter" (you can find it on the enclosed CD) to change the language what you want print.
- 5: Red indicator keep flashing during the printing.
A: Usually it is due to the high temperature of the print head. If printing stopped, please contact the service center for repair.
- 6: Printing speed is very slow for serial printer
A: follow this path and change the set accordingly : Driver -- Properties -- Device Settings -- Print Mode -- Print as soft font.
- 7: Water or other liquid spills into the printer
A: Cut off the power,we can dry the main board or printer head with a hair dryer, careful of the temperature (average 50 degree is ok)
- 9: The printer can't work
A : The battery maybe without electricity, please use power adapter to charge. Then you try to star the printer, if the printer has same problem, please send to service center for repair.
- 10: Can not search the Bluetooth printer
A : Please check the equipment "Bluetooth" function whether opened, the communication whether normal, then replug the printer "Bluetooth Module" try to connect and search "Bluetooth" again, if the problem are still existed, please send the specified location repair.